

PRELIMINARY PROGRAM

# 5<sup>th</sup> International Meeting on Aortic Diseases

New insights into an old problem

CHU Liège, APF



September 15-17

# 2016

Crowne Plaza Hotel  
Liège, Belgium

[www.chuliege-ima.be](http://www.chuliege-ima.be)

CHU  
de Liège

## 5<sup>th</sup> International Meeting on Aortic Diseases

New insights into an old problem

September 15-17 2016 • Liège • Belgium

I am really honored to announce the **fifth edition** of the **International Meeting on Aortic Diseases** that will be organized from **September 15 to 17, 2016** at the Crowne Plaza in Liège, Belgium.

This new edition will also take place in the historic center of Liège, during a famous Wallonian (local) festivity. The Crowne Plaza is at walking distance, but also from many hotels, and all facilities.

IMAD 2016 will focus on new insights on basic research, as well as on the treatment of aortic valves, aneurysms, dissections (types A and B) and aortitis. You are a vascular or a cardiac surgeon, you are a radiologist, a cardiologist, a geneticist, a biologist, an epidemiologist and/or any scientist, you are welcome in Liège where you will have the opportunity to share the experiences of the most renown experts on aortic diseases, as well as to receive answers from them to any question you would have. Registration will open soon online. Visit regularly the website: keep yourself informed!

We look forward to welcoming you in Liège to sharing with you another exciting conference on aortic diseases!

Natzi Sakalihasan

### Under the patronage of:



- University of Liège
- Cardiovascular Surgery Department of CHU of Liège
- Province of Liège
- APF (Aneurysmal Pathology Foundation)
- Faculty of Medicine, ULg

### Course Director:

Natzi SAKALIHASAN  
Liège, Belgium

### Scientific Committee:

Matt BOWN  
Cardiff, United Kingdom

Audrey COURTOIS  
Liège, Belgium

Jean-Olivier DEFRAIGNE  
Liège, Belgium

Alessandro DELLA CORTE  
Napoli, Italy

John ELEFTERIADES  
New Haven, USA

Rebecka HULTGREN  
Stockholm, Sweden

Gregory JONES  
Dunedin, New Zealand

Nicos LABROPOULOS  
Stony Brook, USA

Frank LEDERLE  
Minneapolis, USA

Victor LEGRAND  
Liège, Belgium

Christoph NIENABER  
London, United Kingdom

Florence PINET  
Lille, France

Marc RADERMECKER  
Liège, Belgium

Juliette ALBUISON,  
Paris, France  
Eric ALLAIRE,  
Créteil, France  
George ASIMAKOPOULOS,  
Bristol, United Kingdom  
Parla ASTARCI,  
Bruxelles, Belgium  
Domenico BACCELLIERI,  
Milan, Italy  
Jean-Pierre BECQUEMIN,  
Créteil, France  
Yadav BHATTA,  
Kathmandu, Nepal  
Colin BICKNELL,  
London, United Kingdom  
Malenka BISSELL,  
Oxford, United Kingdom  
Jan D. BLANKENSTEIJN,  
Amsterdam, The Netherlands  
Simon BODY  
Boston, USA  
Jan BRUNKWALL,  
Köln, Germany  
Rachel CLOUGH,  
London, United Kingdom  
Gillian W. COCKERILL,  
London, United Kingdom  
Ronald DALMAN,  
Stanford, USA  
Lazar B. DAVIDOVIC,  
Surcin, Serbia  
Julie DE BACKER,  
Gent, Belgium  
Jean-Paul DE VRIES,  
Nieuwegein, The Netherlands  
Barry DOYLE,  
Perth Australia  
Helena DULGHERU,  
Liège, Belgium  
Hans-Henning ECKSTEIN,  
Munich, Germany  
Per ERIKSSON,  
Stockholm, Sweden  
Paul WM FEDAK,  
Chicago, USA  
Daniel FINK,  
Jerusalem, Israel  
Peter FRAMBACH,  
Luxembourg, Luxembourg  
Jullien GAER,  
Harefield, United Kingdom  
Christian GASSER,  
Stockholm, Sweden  
Athanasios GIANNOUKAS,  
Larissa, Greece  
Richard GIBBS,  
London, United Kingdom  
Evaldas GIRDAUSKAS,  
Bad Berka, Germany  
Jonathan GOLLEDGE,  
Townsville, Australia  
Grégory HANS,  
Liège, Belgium  
Dominic HOWARD,  
Oxford, United Kingdom  
Rebecka HULTGREN,  
Stockholm, Sweden  
Heinz JAKOB,  
Essen, Germany

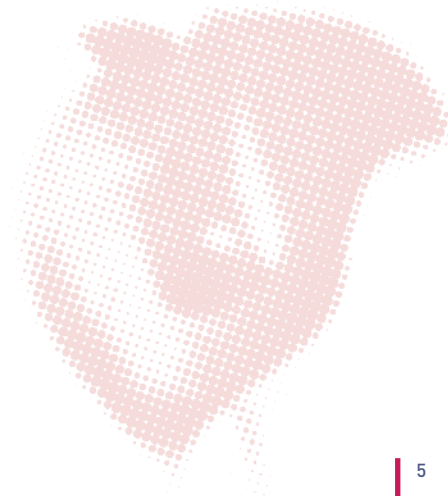
Tilo KÖLBEL,  
Hamburg, Germany  
Fabien KOSKAS,  
Paris, France  
Dung LEE HUU,  
Ho Chi Minh, Vietnam  
Jan LINDEMAN,  
Leiden, The Netherlands  
Jes LINDHOLT,  
Viborg, Denmark  
Bart LOEYS,  
Antwerp, Belgium  
Lars MAEGDEFESSEL,  
Stockholm, Sweden  
Miltos MATSAGAS,  
Ioannina, Greece  
Jean-Baptiste MICHEL,  
Paris, France  
Rita MILEWSKI,  
Philadelphia, USA  
Thomas MODINE,  
Lille, France  
Firas MUSSA,  
New York, USA  
Paul NORMAN,  
Fremantle, Australia  
Domenico PALOMBO,  
Genova, Italy  
Luc PIERARD,  
Liège, Belgium  
Janet POWELL,  
London, United Kingdom  
Cesare QUARTO,  
London, United Kingdom  
Anand SAGGAR,  
London, United Kingdom  
Morgan SALMON,  
Charlottesville, USA  
Thanos SARATZIS,  
Leicester, United Kingdom  
Benjamin STARNES,  
Seattle, USA  
Toru SUZUKI,  
Leicester, United Kingdom  
Apostolos TASSIOPOULOS,  
Stony brook, USA  
Vincent TCHANA SATO,  
Liège, Belgium  
Ramesh TRIPATHI,  
Abu Dhabi, United Arab Emirates  
Gilbert R. UPCHURCH,  
Charlottesville, USA  
Rao Srinivasa VALLABHANENI,  
Liverpool, United Kingdom  
Isabelle VAN HERZEELE,  
Gent, Belgium  
Eric VERHOEVEN,  
Nürnberg, Germany  
Emiliano VOTTA,  
Milan, Italy  
Pascal VRANCKX,  
Hasselt, Belgium  
Anders WANHAINEN,  
Uppsala, Sweden  
James YEH,  
London, United Kingdom  
Koichi YOSHIMURA,  
Yamaguchi, Japan



Thursday September 15		Friday September 16	
08.30	<b>Genetics of aortic diseases</b>	08.30	<b>Aortic dissection</b>
10.00	<b>Coffee break</b>	10.00	<b>Coffee break</b>
10.30	<b>Epidemiology and treatment of AAA</b>	10.30	<b>Challenging cases of aortic dissection</b>
12.30	<b>Lunch break</b>	12.30	<b>Lunch break</b>
13.30	<b>New advances in physiopathology of aortic diseases</b>	13.30	<b>TEVAR for TAA</b>
15.00	<b>Generalities on medical treatment of AAA</b>	15.00	<b>Potpourri related with aortic diseases</b>
16.30	<b>Coffee break</b>	16.30	<b>Coffee break</b>
17.00	<b>Causes and management of ruptured AAA</b>	17.00	<b>Generalities on EVAR</b>
19.00	<b>End of the sessions</b>	19.15	<b>End of the sessions</b>

Saturday September 17	
08.30	<b>Risk stratification in BAV aortopathy: new concepts</b>
10.00	<b>Coffee break</b>
10.30	<b>Ascending aorta</b>
12.30	<b>Lunch break</b>
13.30	<b>Aortic arch</b>
15.00	<b>TAVI</b>
17.00	<b>Adjournment</b>

20.00 **IMAD Official dinner - Thursday**  
**Palais Provincial**  
 All delegates are welcome to register with one guest. Seated dinner.  
 Participation fee: 55 € per person.





07.30 Welcoming coffee

08.00 Welcome address, **Natzi Sakalihasan**  
Distinguished lecture, **Frank Lederle**

## I Genetics of aortic diseases Greg Jones, Matthew Bown

08.30 Extra-aortic cardiovascular features in Marfan syndrome - Relevance and management, **Julie De Backer**  
Whole blood DNA methylation analysis in AAA; an epigenome-wide association study, **Greg Jones**  
Combining Mendelian genetics and genetic epidemiology for AAA, **Juliette Albuissou**  
New insights on genetic aspect of aortic dissections, **John Elefteriades**  
Does sex matter in aortic aneurysm and dissection? **Bart Loeys**

10.00 Coffee break

## I Epidemiology and treatment of AAA Frank Lederle, Anders Wanhainen

10.30 Findings from the Swedish AAA screening program, **Anders Wanhainen**  
Is risk-factor targeted AAA screening the future? Data from the Oxford Vascular Study, **Dominic Howard**  
Morphology of ruptured vs unruptured AAA, **Janet T. Powell**  
AAA rupture in Stockholm, **Rebecka Hultgren**  
Australian trials to identify treatments to slow AAA growth, **Jonathan Golledge**  
AAA measurement and enlargement, **Frank Lederle**  
CT-overestimation of AAA size severely impacts the cost-effectiveness of AAA repair, **Jan Lindeman**  
Aortic aneurysms in the young (< 40 yrs age). Causes and management, **Ramesh Tripathi**  
Discussion

12.30 Lunch break

## I New advances in physiopathology of aortic diseases Audrey Courtois, Florence Pinet

13.30 Angiogenesis in human aortic diseases, **Jean-Baptiste Michel**  
Lipoproteins in aortic diseases, **Gillian Cockerill**  
The translational story of the relationship between reversible pulmonary obstructive disease and AAA, **Jes Lindholt**  
Non-coding RNA and aneurysm, clinical implications: from experimental animal models to therapeutics approaches, **Lars Maegdefessel**  
Cell-specific expression of non coding RNA in human AAA: new approach to find biomarkers, **Florence Pinet**  
Circulating miRNA associated with instable abdominal aortic aneurysm PET positive, **Audrey Courtois**

Circulating vascular basement fragments are associated with the diameter of abdominal aorta, **Anders Wanhainen**

Discussion

## I Generalities on medical treatment of AAA Gilbert R. Upchurch, Paul Norman

15.00 Where and why does thrombus develop in aortic disease, **Barry Doyle**  
Focal adhesion Kinase is a novel target for pharmacotherapy of abdominal aortic aneurysm, **Koichi Yochimura**  
Inhibition of aneurysmal progression by local PGG infusion in experimental porcine AAA, **Jes Lindholt**  
TElmsartan in the management of abDominal aortic aneurYsm (TEDY): the study protocol for a randomized controlled trial, **Jonathan Golledge**  
What is the role of the KLF4 during the development of abdominal aortic aneurysm, **Morgan Salmon**  
The effect of metformin on AAA, **Ronald Dalman**  
What do we know about AAA and diabetes and does it matter? **Paul Norman**  
**Keynote lecture.** Medical treatment of the AAA in human. Fiction or reality? **Gilbert R. Upchurch**

16.30 Coffee break

## I Causes and management of ruptured AAA Rebecka Hultgren, Ronald Dalman

17.00 The biology of AAA progression and rupture: beyond MMPs and inflammation, **Jan Lindeman**  
Imaging alternatives in order to prevent rupture (volume vs diameter), **Christian Gasser**  
Is the risk different for female or male FDRs to AAA patients? **Rebecka Hultgren**  
Emergency EVAR – the new standard for almost every patient with a ruptured AAA (technique and own clinical data over 10 years, literature review), **Hans-Henning Eckstein**  
Open repair of RAAA is always possible - is it always better? **Lazar Davidovic**  
Prolonged or renewed ICU stay after AAA-repair - a “crash investigation”, **Anders Wanhainen**  
**Keynote lecture.** The volume outcome relationship in elective and emergent AAA surgery in Germany (national data from > 120.000 open and endovascular aortic reconstructions), **Hans-Henning Eckstein**  
**Keynote lecture.** Lessons learned from IMPROVE trial, **Janet T. Powell**  
Questions to experts & panel discussion

19.00 End of the sessions

20.00 Official dinner (upon registration)

# Friday September 16



08.00 Welcoming coffee

## I Aortic dissection

Natzi Sakalihasan, Christoph Nienaber

08.30 Diagnostic algorithm for acute aortic dissection – imaging and biomarkers, Toru Suzuki

Therapeutic pathways in acute aortic dissection, Cesare Quarto

Individualized risk assessment in type B aortic dissection, Rachel Clough

Prognostic evaluation for survivors of aortic dissection – long-term perspective, Anand Sagar

Can we predict aortic size PRIOR to dissection? Yes! John Elefteriades

Computational modelling of type B aortic dissection: does it help manage patients? Barry Doyle

Initial experience in dissection of aorta in Nepal, Yadav Bhatta

**Keynote lecture.** TBA, Christoph Nienaber

Discussion

10.00 Coffee break

## I Challenging cases of aortic dissection

Richard Gibbs, Jean-Olivier Defraigne

10.30 Aortic dissection – the great masquerader, James Yeh

Proximal aortic dissection – the role of the frozen elephant, Heinz Jakob

Proximal aortic dissection – the emerge of TEVAR, George Asimakopoulos

Staged repair of complex aortic dissection – safer or superfluous? Jullien Gaer

Severe lower extremity malperfusion in a patient with acute type A dissection, what is the priority? Vincent Tchana-Sato

Direct false lumen occlusion techniques in chronic TBAD. Update on techniques and clinical outcomes, Tilo Kölbel

Type B aortic dissection in the patient with MYLK variants. What is the best solution: TEVAR or open repair? Vincent Tchana-Sato

Clinical outcomes of TBADs in patients with connective tissue diseases (Marfans, Loeys-Dietz, etc.) are worse than in those without, Firas Mussa

Positive family history of aortic dissection dramatically increases dissection risk in family members, John Elefteriades

Questions to experts and panel discussion

12.30 Lunch break

## I TEVAR for TAA

Eric Verhoeven, Hans-Henning Eckstein

13.30 Open surgical conversion after TEVAR: incidence and treatment options, Domenico Baccellieri

Spinal cord ischemia in TAAA branched grafting, Eric Verhoeven

CSF drainage in TEVAR: anesthetic considerations, Gregory Hans

Neuromonitoring using motor and somatosensory evoked potentials in aortic surgery, John Elefteriades

Staged hybrid repair of extensive TAAA, Gilbert R. Upchurch

Is there an increased risk to more complex fenestrated EVAR? Eric Verhoeven

Fenestrated and branched grafts: lessons after four years of the Windows trial, Jean-Pierre Becquemin

Consensus exercise on management of thoracic and thoracoabdominal aortic aneurysms in the United Kingdom, Srinivasa R. Vallabhaneni

Type B dissection: update on indications and results using a pragmatic policy, Fabien Koskas

Ask to experts and panel discussion

## I Potpourri related with aortic diseases

Colin D. Bicknell, Benjamin W. Starnes

15.00 Radiation protection for patient and staff during routine EVAR and TEVAR procedures, Miltos Matsagas

Contemporary management of Primary Aortic Mural Thrombosis (PAMT) - what's new? Ramesh Tripathi

Management of blunt aortic injury with emerging devices, Benjamin W. Starnes

18F-FDG PET/CT in the management of aortitis, Natzi Sakalihasan

Mycotic aneurysm management in India - open/endovascular or hybrid? Ramesh Tripathi

Management aortic coarctation in 2016: surgery vs endovascular treatment, Colin D. Bicknell

Management of graft infection after EVAR-TEVAR. Can PET-CT predict the outcome of prosthetic graft infections? Natzi Sakalihasan

Cumulative incidence of graft infection after primary prosthetic aortic reconstruction in the endovascular era, Jan Blankensteijn

**Keynote lecture.** Medical errors during endovascular treatment for aortic diseases. How can we avoid them? Colin D. Bicknell

16.30 Coffee break



# Friday September 16

## I Generalities on EVAR

Nicos Labropoulos, Isabelle Van Herzeele

- 17.00 Impact of geometry and respiratory-induced deformation during snorkel/chimney and fenestrated endografts for complex abdominal aortic aneurysms, Ronald Dalman
- Flow characteristics of Type II endoleaks. Does it matter? Nicos Labropoulos
- Invisible endoleak after stent graft: a ghost or a myth? Eric Allaire
- Use of 3-D printed templates to facilitate FEVAR, Benjamin W. Starnes
- Apposition of the endograft post-EVAR. Improved technique to calculate and its importance to predict failure, Jean-Paul de Vries
- Patients' compliance with post-EVAR follow-up and its impact on the outcome, Athanasios Giannoukas
- Early and long-term outcomes after open or endovascular repair for abdominal aortic aneurysms in high-risk patients, Domenico Palombo
- Renal function is the main predictor of acute kidney injury after endovascular abdominal aortic aneurysm repair, Thanos Saratzis
- Is there a role for use of endoanchors in EVAR or TEVAR procedures? Apostolos Tassiopoulos
- Profile of secondary interventions after EVAR in current practice: how are they triggered and what are the implications for surveillance? Srinivasa R. Vallabhaneni
- Ask to experts and panel discussion
- Keynote lecture.** Decision making in AAA repair in 2016: open or endo? Jan Blankensteijn
- Questions to experts and panel discussion

19.15 End of the sessions

# Call for abstracts



Abstracts are being accepted and will be considered for short (4') oral or poster presentation. APF will award the four best posters and/or communications as such:

- **Raymond Limet Prizes (750 € and 500 €)**  
will be attributed to the two best posters/ short communications on natural history of aortic aneurysms and aortic dissections (Type B).
- **Camillo Di Croce Prizes (750 € and 500 €)**  
will be attributed to the two best posters/ short communications on familial and/or genetic aspects of aneurysms.

Deadline for submissions: **June 1, 2016**

Submit your abstract now! on the online platform only

[http://www.event.divine-id.com/abstract/connexion\\_abstract.php?thm=27](http://www.event.divine-id.com/abstract/connexion_abstract.php?thm=27)





## 08.00 Welcoming coffee

### I Risk stratification in BAV aortopathy: new concepts Alessandro Della Corte, Paul WM Fedak

- 08.30 Genotype-based risk stratification of BAV disease: dream or reality? **Simon Body**  
Implementing phenotype-based risk stratification of BAV aortopathy in surgical practice, **Evaldas Girdauskas**  
Structural finite element modelling of the bicuspid root to understand disease progression, **Emiliano Votta**  
Functional imaging of the BAV aorta to predict aortopathy progression, **Malenka Bissell**  
Identifying circulating biomarkers of BAV aortopathy risk, **Alessandro Della Corte**  
How to integrate imaging and biochemistry into risk stratification of bicuspid aortopathy, **Paul WM Fedak**  
Questions to experts and discussion

## 10.00 Coffee break

### I Ascending aorta John Elefteriades, Jean-Olivier Defraigne

- 10.30 The pathology of thoracic aortic aneurysm, **Per Eriksson**  
What is the role of the LOX during the development of the aortic aneurysms and dissections? **TBA**  
Twenty-five year outcome of composite graft aortic root replacement: near "curative" impact on aortic root disease, **John Elefteriades**  
Is there really research-based evidence for a guideline dimension for ascending aortic aneurysm repair? **Simon Body**  
How to classify the dilatations of the ascending aorta? **Alessandro Della Corte**  
Modeling of predissection aortic size in acute type A dissection: more than 90% fail to meet the guidelines for elective ascending replacement, **Rita K Milewski**  
Management of asymmetric aneurysm of valsalva sinuses, **Natzi Sakalihasan**  
Management of aorto-ventricular tunnels: a rare cause (disregarded) of the heart failure in occidental countries. Single center experiences in HCMC, Vietnam, **Dung Lee Hue, Natzi Sakalihasan**  
Questions to experts and discussion

## 12.30 Lunch break

### I Aortic arch Firas Mussa, Jan Brunkwall

- 13.30 Supraaortic debranching and TEVAR for arch aneurysms – is it a valid alternative for open surgery? (Single center series on > 50 pts), **Hans-Henning Eckstein**  
Branched endograft vs. chimney techniques for treating complex arch lesions. Which is best, when and why, **Firas Mussa**  
Update on total arch endovascular repair, **Rachel Clough**  
Anomalies of the derivatives of the aortic arch. Arch development easy understandable using the double-arch hypothesis by J.E. Edwards, **Tilo Kölbel**  
Various cardiac access routes to treat ascending aortic and arch lesions: advantages and limitations, **Firas Mussa**  
Does the bovine arch have any influence on the outcome of arch stentgrafting in dissections? **Jan Brunkwall**  
Distal aortic reintervention after surgery for acute DeBakey type I or II aortic dissection: open vs. endovascular repair, **Rita K. Milewski**  
**Keynote lecture.** Hybrid stent-grafts: fac totum of open surgery of the aortic arch? **Fabien Koskas**  
Discussion

### I TAVI Marc Radermecker, Victor Legrand

- 15.00 TAVI indications, **Luc Piérard**  
New imaging modalities for assessment of TAVI procedure and results, **Helena Dulgheru**  
Critical analysis of recent registries and randomized trials, **Victor Legrand**  
Choice of the best transcatheter site for implantation, **Marc Radermecker**  
Off label indications: where are we? **Thomas Modine**  
Antithrombotic treatment: DAPT or OAC? **Pascal Vranckx**  
Valve fair: review of actual and future devices, **Peter Frambach**  
New insight of percutaneous native aortic valve resection prior to TAVI. Aortic valve replacement *versus* TAVI, **Parla Astarci**  
What is the best treatment for women with severe aortic stenosis, **Daniel Fink**  
Panel discussion on a clinical case

## 17.00 Closing remarks & Awards ceremony

## 18.00 Adjournment

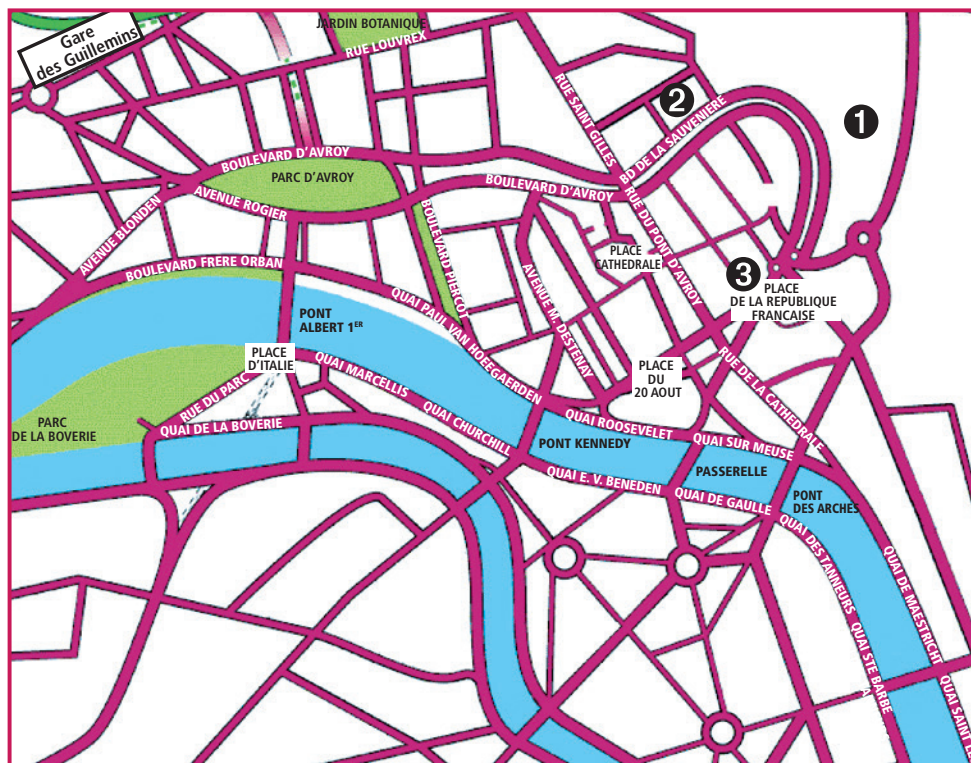
# General information



## Meeting venue

### Crowne Plaza Hotel

9-11, rue du Mont St Martin, Liège, Belgium  
[www.crowneplazaliège.be](http://www.crowneplazaliège.be)



### 1. Crowne Plaza - Congress venue

9-11, rue du Mont St Martin  
[www.crowneplazaliège.be](http://www.crowneplazaliège.be)

### 2. Pentahotel Liège\*\*\*\* (5 min. walk)

100, bd de la Sauvenière  
[www.pentahotels.com](http://www.pentahotels.com)

### 3. Ibis Liège Centre Opéra\*\*\* (5 min. walk)

41, place de la république Française  
[www.ibis.com](http://www.ibis.com)

## OFFICIAL LANGUAGE

The official language of the sessions is English.

## IMPORTANT DEADLINES

- Abstract competition for poster or short communication ..... **June 1**
- Early bird fees ..... **June 20**
- Hotel reservation & pre-registration **August 25**

## TARGET AUDIENCE

- Cardiovascular and thoracic surgeons
- Anaesthesiologists
- Cardiologists
- Radiologists
- Geneticists
- Basic scientists
- Ultrasound technicians and nurses
- Students

## REGISTRATION FEES

Included in the registration:

Final program, online abstract book, access to all scientific sessions, exhibition hall, breakfasts, coffee breaks and lunches.

Day passes for September 15, 16 and 17 are available and can only be purchased onsite. The first author from each selected abstract or poster of the competition will benefit from the reduced fee of 190 €.

## SOCIAL EVENT

IMAD Official dinner: Palais Provincial

Thursday, September 15, 20.00

All delegates are welcome to register with one guest.

Participation fee: 55 € per person.

Seated dinner.

## ACCESS

### By car

Follow the signs "Liège" or "Luik".

### By train

Liège-Guillemins train station. High speed trains from Paris, Brussels, Cologne and Amsterdam. Regional and intercity trains from most Belgian cities.  
[www.sncb.be](http://www.sncb.be)

### By air

- Liège-Bierset Airport.  
[www.liegeairport.com](http://www.liegeairport.com)
- Brussels National Airport (Zaventem) or Brussels South Airport (Charleroi). Then take a train to Liège (approx. 1 hour).  
[www.brusselsairport.be](http://www.brusselsairport.be)

## EVENT COORDINATORS' CONTACTS

### Céline Taty

Individual registrations / Faculty logistics

Tel: +33 (0) 4 91 57 19 64  
[ctaty@divine-id.com](mailto:ctaty@divine-id.com)

### Michèle Caboste

Group/Sponsor reservations

(minimum of 5 persons)  
Tel: +33 (0) 4 91 57 19 66  
[mcaboste@divine-id.com](mailto:mcaboste@divine-id.com)

### Christine Arzouyan

General organization

Tel: +33 (0) 4 91 57 19 63  
Mobile: +33 (0) 613 96 08 70  
[carzouyan@divine-id.com](mailto:carzouyan@divine-id.com)

### Vérane Bergeron Moreau

Executive manager

Tel: +33 (0) 491 57 19 62  
Mobile: +33 (0) 621 78 87 16  
[vbergeron@divine-id.com](mailto:vbergeron@divine-id.com)

## LOCAL CONTACT

### Geneviève Péters

Scientific program

Tel: + 32 4 366 43 49  
[genevieve.peters@chu.ulg.ac.be](mailto:genevieve.peters@chu.ulg.ac.be)

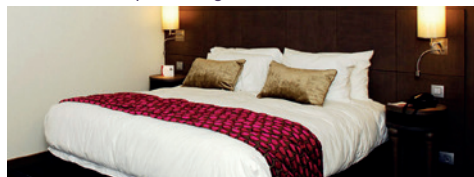


# General information

## ACCOMMODATION

### Crowne Plaza (congress venue)

9-11, rue du Mont St Martin  
www.crowneplazaliège.be



The Crowne Plaza hotel is situated right in the heart of Liège, very close to the Place Saint-Lambert, various shopping and cultural centres as well as the longest open-air market in Europe. Situated a few minutes by car from Liège airport and within easy reach of the motorways from neighbouring countries.

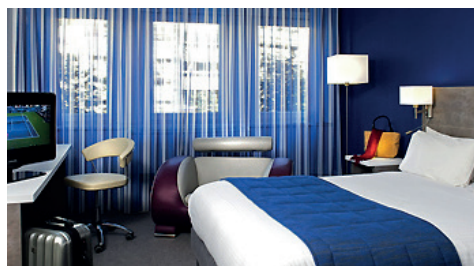
Single: 146 €

Double: 167 €

City tax: 7 € (per night and per room, due to the hotel not payable in advance).

### Pentahotel Liège\*\*\*\* (5 min. walk)

100, bd de la Sauvenière  
www.pentahotels.com



500 meters from the congress venue (7 minutes walk).

Fully renovated in 2014. 4-star hotel, ideally situated in the heart of Liège. Right next to the shopping district and renowned Carré area, the vibrant center of Liège. 2 km from the train station.

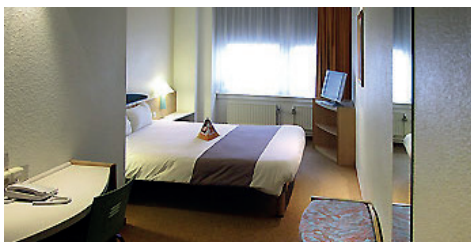
Single: 135 €

Double: 151 €

City tax: 4.20 € (per night and per room, due to the hotel not payable in advance).

### Ibis Liège Centre Opéra\*\*\* (5 min. walk)

41, place de la république Française  
www.ibis.com



500 meters from the congress venue (7 minutes walk). Situated in the city center, next to the opera house, in the Opéra shopping center.

Single: 73 €

Double: 88 €

City tax: 3.40 € (per night and per room, due to the hotel not payable in advance).

divine [id] made reservations for participants at privileged rates at different hotels. To benefit from these rates, please return your accommodation form as soon as possible, indicating the hotel of your choice and a second choice, should the first not be available. Upon reception of the accommodation form, together with a deposit of one night accommodation, a booking confirmation letter will be sent to the participant by email. The balance has to be paid one month before arrival which means before August 16 at the very latest. The daily hotel tax and any other extra are payable directly to the hotel on departure. Any booking & changes must be communicated in writing to divine [id] before August 29.

A 10% administrative fee will be applied to any cancellation required until August 15 included. From August 16, no refund will be granted. Group cancellation policy supersedes general cancellation policy. Group reservation applies to more than one participant.

# Registration & housing form



Pre-registration before August 25, 2016

Online registration: [www.chuliege-imaab.be](http://www.chuliege-imaab.be)

divine [id]

17, rue Venture - 13001 Marseille - France

Phone +33 (0) 491 57 19 64

Céline: [ctaty@divine-id.com](mailto:ctaty@divine-id.com)

## Participant information

Title: ☐ Prof ☐ Dr ☐ Mr ☐ Ms

Last Name .....

First Name .....

Institution / Company .....

Address .....

Postal code ..... City .....

Country .....

Mobile .....

Phone .....

Fax .....

E-mail .....

## Sponsored by

Contact .....

Address .....

Postal code ..... City .....

Country .....

Mobile .....

Phone .....

E-mail .....

## Speciality

☐ Cardiovascular or thoracic surgeon ☐ Anaesthesiologist ☐ Cardiologist

☐ Radiologist ☐ Geneticist ☐ Basic scientist ☐ Ultrasound technician or nurse

☐ Student ☐ Industry professional

☐ Other .....

EASIER!  
ATTACH YOUR BUSINESS CARD!

## Please send back both sides of the form

### Registration fees (VAT 21% incl.)

	Before June 20	From June 20 & onsite
<input type="checkbox"/> Physician, Industry professional	390 €	490 €
<input type="checkbox"/> Resident*, Fellow*, Nurse*, Technician*, Liège CHU member, Abstract or Poster presenter	190 €	240 €
<input type="checkbox"/> Industry professional non sponsor	1 550 €	2 000 €

\* A confirmation letter is required.

### Social event

☐ IMAD Official dinner participation (Thursday September 15): 55 € x ..... (Nb. person)

### Hotel accommodation (VAT 6% incl.)

(PRICES INCLUDE BREAKFAST & EXCLUDE CITY TAX)

	Single	Double / Twin	Choice hotel
<input type="checkbox"/> 1. Crowne Plaza (congress venue)	146 €	167 €	<input type="checkbox"/>
<input type="checkbox"/> 2. Pentahotel Liège Centre****	135 €	151 €	<input type="checkbox"/>
<input type="checkbox"/> 3. Ibis Liège Centre Opéra**	73 €	88 €	<input type="checkbox"/>

Refund of fee: a 10% administrative charge will be applied to cancellations up to August 15. From August 16, no refund will be given (including cancellation of registration & social event). Name changes are requested before August 25. No-shows at the congress will be charged the full fee. Refunds will be processed after the congress by end of December 2016. A one night deposit is needed upon booking to confirm any hotel reservation. The whole stay has to be paid before August 16 to avoid cancellation of unpaid nights. City tax is not included in the room rates and will have to be paid directly to the hotel.

**NB: Group cancellation policy supersedes general cancellation policy. Group reservation applies to more than one participant.**

### Booking details

Arrival date     Type of room: ☐ Single ☐ Double ☐ Twin  
Departure date     Nb. of nights  Rate per night ..... €

### Total due

Registration ..... €  
IMAD Official dinner ..... €  
Hotel ..... €  
(☐ 1 night deposit ☐ whole stay)

**TOTAL** ..... €

### Payment by:

☐ Credit Card ☐ Visa ☐ Mastercard (no other card)

Credit Card Number

3 last numbers at the back of the card

Expiration Date

Cardholder's Name .....

Cardholder's Signature .....

Your signature authorizes your credit card to be charged for the total payment due. We reserve the right to charge the correct amount if different from the total listed.

☐ Bank transfer to divine [id] SARL

Bank Banque Martin Maurel  
IBAN FR 76 1336 9000 0434 0207 0101 854  
BIC BMMMFR2A – RCS Marseille B 308 365 576





Mdeon Visa number: 16/V2/4726/005044.

**CHU**  
de Liège

**Scientific contact:**

Dept of Cardiovascular & Thoracic Surgery • CHU Liège • 4000 Liège • Belgium  
Tel.: + 32 4 366 71 64 • Fax: + 32 4 366 74 10 • **Geneviève Péters** genevieve.peters@chu.ulg.ac.be

**ORGANIZATION:**

divine [id] agency • **Vérane Bergeron Moreau** • **Christine Arzouyan**  
carzouyan@divine-id.com • 17, rue Venture • 13001 Marseille • France  
Tel.: +33 (0) 491 57 19 60 • Fax: +33 (0) 491 57 19 61 • [www.divine-id.com](http://www.divine-id.com)

divine  
**[id]**  
sparkling events